

BHS CAMP HOSPITAL PANEL

(Removable and reusable)

INTRODUCTION

Due to the current situation of global pandemic COVID 19, BHS has developed a medicalized panel for medical assistance in camp, in order to relieve pressure of intensive care units in hospitals.

This panel offers high hygiene standards, supplies and connectivity similar to those in a hospital.

It is designed to be installed very quickly using simple and low cost elements, and with the possibility to dismantle and reuse it in another location.

DESCRIPTION

It is robust, easy to transport and facilitates the connection of 4 hospital beds (2 on each side) to overhead electricity and data networks, and that is prepared to support oxygen outlets.

Each panel has stainless steel lifting points at its ends for lifting and to facilitate the movement when using forklifts and / or pallet jacks.

It also has stabilization elements to be installed once the panel has reached its final location. These are also made of stainless steel, to facilitate their durability, maintenance and cleaning.

All the elements use the same fixing system, in 12mm metric, which can be installed manually or mechanically.

The faces are covered with hospital grade vinyl of high performance strength and durability.

The individualized supply connections are located in the upper central part of each panel, to ease the overhead distribution of supplies.

The panel can be provided in 2 basic versions:

- A. Hospital room panel type, which includes power, data, and oxygen connections.
- B. ICU panel, which includes all panel A connections + medical gases and inhale system with one or 2 redundant inlets.

We can design mixed configurations according to client needs.

These panels can be removed just as easily as they are mounted and can be reused elsewhere where needed. They can also be stored to be used in case of future needs.

DIMENSIONS

Each panel measures 2 meters high by 6,25 meters long, its thickness is 120mm and various hospital technical elements are incorporated on each side, such as lighting, electrical and data so that its thickness for transport purposes is 250mm.

LOGISTICS

This allows to locate 18 units on a standard road transport platform (the cheapest) and therefore a performance of 72 beds per truck is obtained.

The panels are packed in groups of 2 for easy unloading.

WEIGHT

The estimated weight of each panel is 250 kg +/- 10kg depending on the medical elements available when manufacturing.

Its light weight allows easy handling by electric or manual pallet jacks.

POSSIBLE LAY OUT IN STANDARD SPORTS HALL

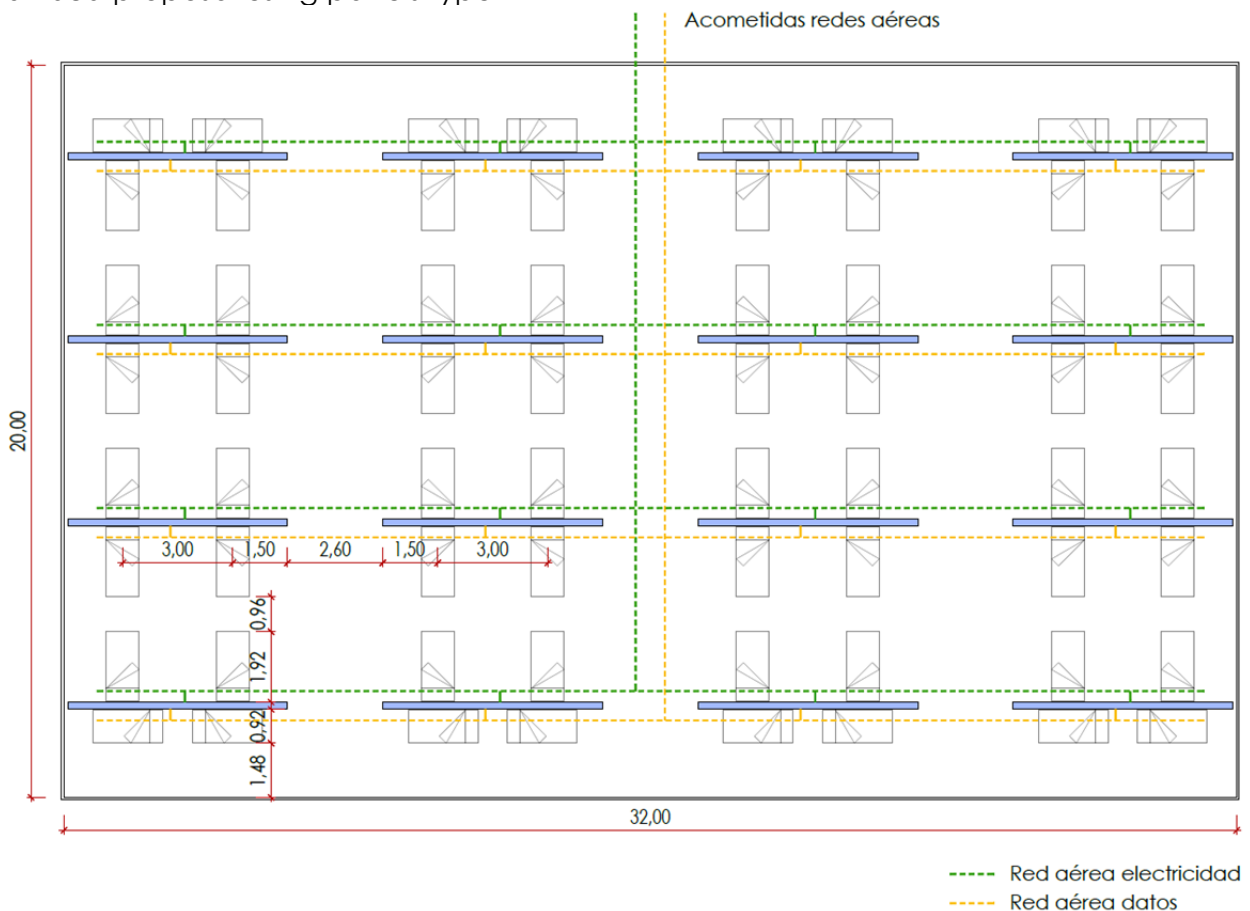
There is a large number of sports halls, whose central courts have standard dimensions of approximately 20 x 32 or 35 meters.

This space allows the location of 60 to 100 beds served by BHS hospital panels.

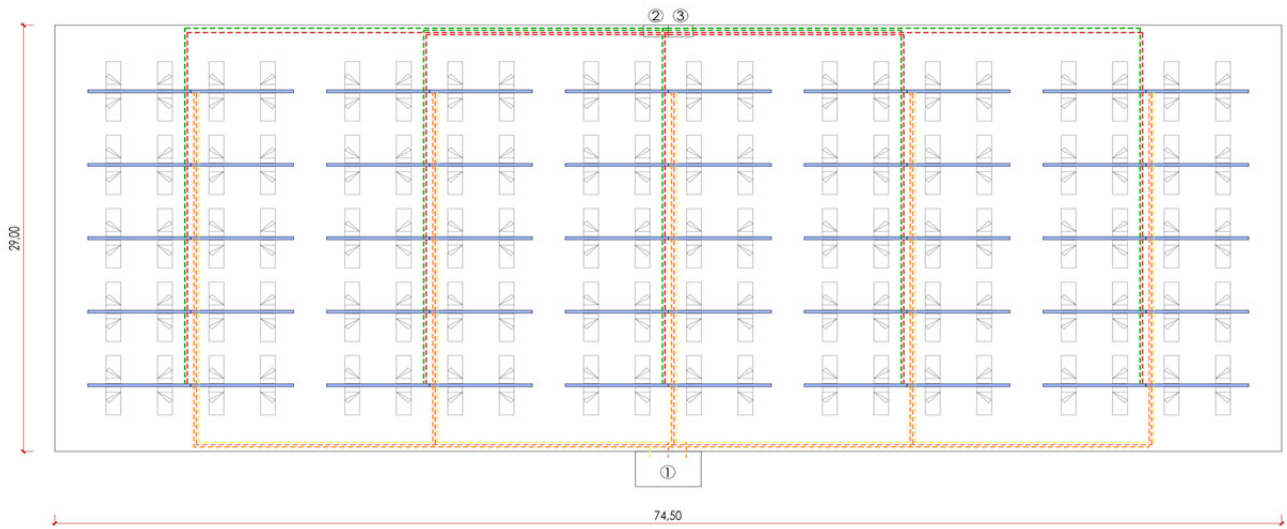
The BHS hospital panel can be installed in sports centers, but also in exhibition centers, pavilions or open spaces of all kinds.

Configuration examples:

64 bed proposal using panels type A



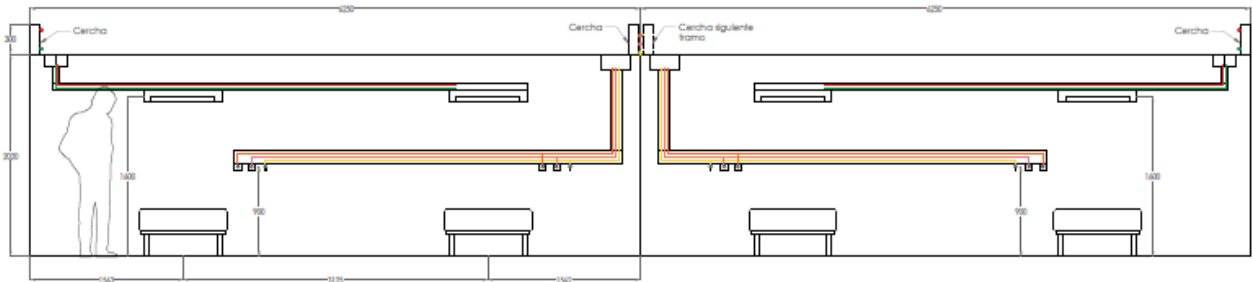
200 bed lay out proposal using panel type B (1+1)



- - - Red aérea de oxígeno de 18 o 22mm de diámetro, 180 ml
- - - Red aérea de aire medicalizado (presión) de 18 o 22mm de diámetro, 180 ml
- - - Red aérea vacío de 18 o 22mm de diámetro, 180 ml
- - - Red aérea de electricidad, 210 ml
- - - Red aérea de telecomunicaciones, 210 ml

- ① Tanque producción gases medicalizados
- ② Cuadro control eléctrico
- ③ Ordenador central de telecomunicaciones

Elevation of 2 BHS panels; giving service to 4 beds per face.



GENERAL SALES CONDITIONS

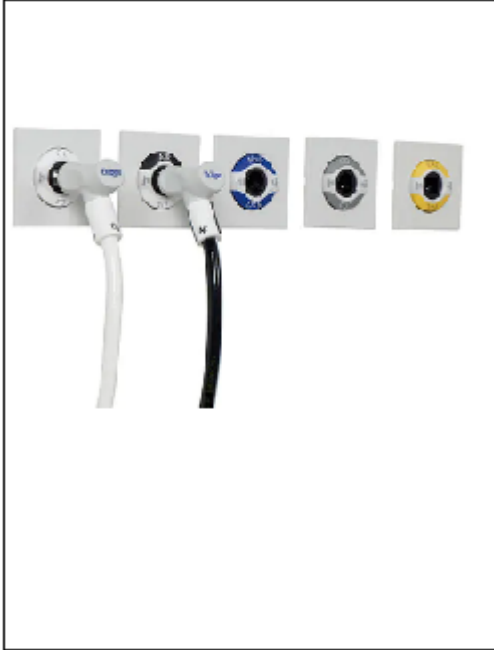
- Transport options:
 - a) standard truck platform
 - b) standard 40 feet container
- Price on request
- Delivery time: 2 weeks from contract signature and payment reception 100% in advance

Note: The characteristics of some of the external elements of the panel may vary depending on market conditions, maintaining technical benefits in all cases.

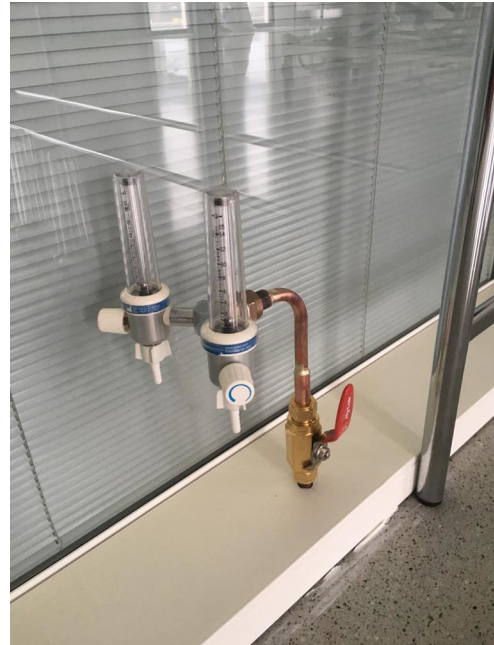
*Important note:

There is a lack of stock of outlet devices of medical gases in all Europe.
This stock limitation impede the installation of this devices on BHS panels.
We offer an alternative solution with no standard alternatives.

Standard outlets example:



Alternative:



* All products and designs presented in this document are the property of Barcelona Housing Systems S.A.

* Barcelona Housing Systems S.A. offers to study the adaptation of the panels according to the specific needs of the client.

* Barcelona Housing Systems S.A. is not responsible for the misuse and / or poor connections of our panels to the different air networks of services and supplies of energy, gases and data.

* Each panel containing medical gas pipes has been designed according to the UNE-EN ISO 7396-1 Standard. These pipes have been tested for a nominal pressure of 8 bar at the supply points.

CONTACT BARCELONA HOUSING SYSTEMS

Email. info@barcelonahousingsystems.com
c/Evarist Arnús, 58 · 08014 Barcelona
www.barcelonahousingsystems.com